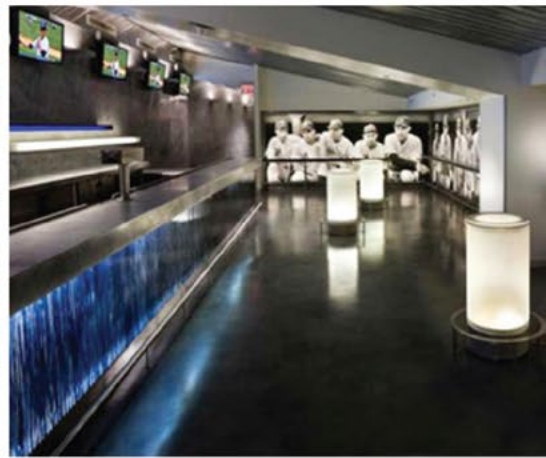




INNOVATIVE | PRACTICAL | BEAUTIFUL

Decorative Resin Panels



NATURE+ is Lumigraf's line of **translucent** decorative panels, made of eco-resin with organic materials or textile interlayers.

- ◆ A specially-formulated co-polyester resin which is both environmentally responsible and high-performing
- ◆ Engineered to incorporate 40% post-industrial re-grind content
- ◆ Impact resistant and lightweight
- ◆ UV resistant (blocks up to 98% of UV rays)
- ◆ Nonporous and resistant to bacterial growth
- ◆ Stain resistant and easy to clean with mild soap and a soft cloth
- ◆ Easy to cut, bond and drill with common woodworking tools



NATURE+ is used for **COMMERCIAL** and **RESIDENTIAL** applications, such as:

- ◆ Retail Displays
- ◆ Light Fixtures
- ◆ Ceiling Tiles
- ◆ Cabinet Doors
- ◆ Feature Walls
- ◆ Signage
- ◆ Furniture
- ◆ Backsplashes
- ◆ Closet Doors
- ◆ Shower Doors and Enclosures
- ◆ Room Partitions

Dimension: 4' x 8' (1220mm x 2440mm) / 3/16" (5mm)*
 Finish: Sandstone
 Composition: Translucent ecological resin
 Important Details: When installed in high humidity environments, NATURE+ panels must be sealed on all sides in order to avoid the inter-layer wicking moisture. See technical documents for details.
 *Other gauges also available, contact your customer service rep for details.

ORGANIC MATERIALS: 11 STYLES

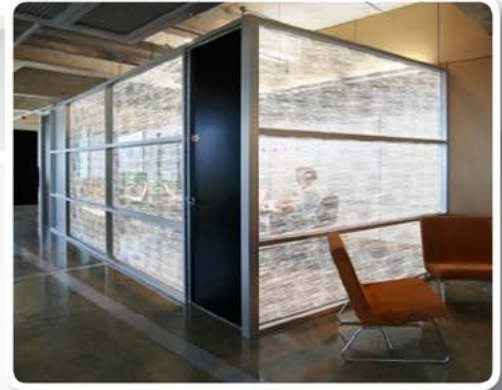


**TEXTILES:
2 STYLES**



C-THRU panels are a semi-transparent material featuring a translucent pattern. Light permeable and maintains privacy. Product features modern, clean designs.

- ◆ Customizable pattern available**
- ◆ Functional and on-trend
- ◆ Easy to clean and to maintain
- ◆ Short lead times



C-THRU panels are mainly used in **COMMERCIAL** applications, such as:

- ◆ Architectural & Modular Wall Systems
- ◆ Freestanding Systems and Mobile Furniture
- ◆ Acrylic Components
- ◆ Door Inserts
- ◆ Lighting Design

Dimension: 4' x 8' (1220mm x 2440mm) / 3/16" (5mm)*
Finish: Satin and/or Glossy
Composition: Acrylic or Class "A" fire-rated polycarbonate, eco-solvent ink, vinyl
Important Details: C-Thru panels are designed for use with framing hardware. Please see technical documents for additional details.
 *Other gauges also available, contact your customer service rep for details.

Currently available in **3** colors and over **16** patterns including:



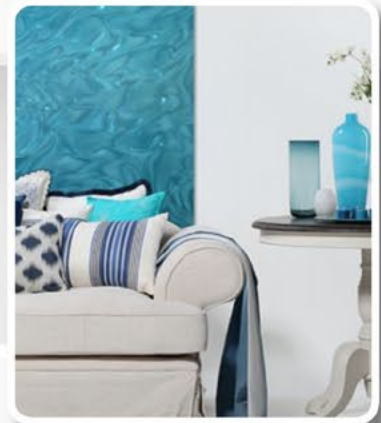
LUMI-9 is Lumigraf's signature series. Lumi-9 is extremely versatile and features a semi-transparent, laser etched pattern.

- ◆ Currently available in 3 patterns and 15 colors**
- ◆ Made of laser etched polycarbonate
- ◆ UV resistant and durable
- ◆ Available in Fire Rated "A" polycarbonate panels
- ◆ High visual impact

Dimension: 2' x 8' (610mm x 2440mm) / 1/8" (3mm) or 1/4" (6mm)*
 4' x 8' (1220mm x 2440mm) / 1/4" (6mm) (panel will have a seam in the pattern)
Film: 24" wide by up to 250'
Finish: Satin
Composition: Acrylic or Class "A" fire-rated polycarbonate, laser etched polycarbonate
Important Details: Lumi-9 can be used in a wide range of applications. Care must be taken when fabricating (cutting, drilling, edge finishing and gluing), please read instructions carefully.
 *Other gauges also available, please contact us for details.

LUMI-9 panels can be used in commercial applications, such as:

- ◆ Light Fixtures / lighting design
- ◆ Door inserts and partitions
- ◆ Signage
- ◆ Back-lit feature walls
- ◆ Retail displays
- ◆ Ceiling tiles



**certain conditions apply, please contact us for details

Lumigraf's **METALLIZED PANELS** are unique to Lumigraf and are available four series, each of which features a different visual effect

Dimension: 4' x 8' (1220mm x 2440mm) / 1/16" (1,6mm)*
Finish: Glossy or Satin
Composition: Acrylic or Class "A" fire-rated polycarbonate, Eco-Solvent UV resistant ink, metallic film, vinyl
Important Details: Metallized panels are designed for indoor use only. Care must be taken when fabricating (cutting, drilling, edge finishing and gluing), please read instructions carefully
 *Other gauges also available, contact your customer service rep for details.

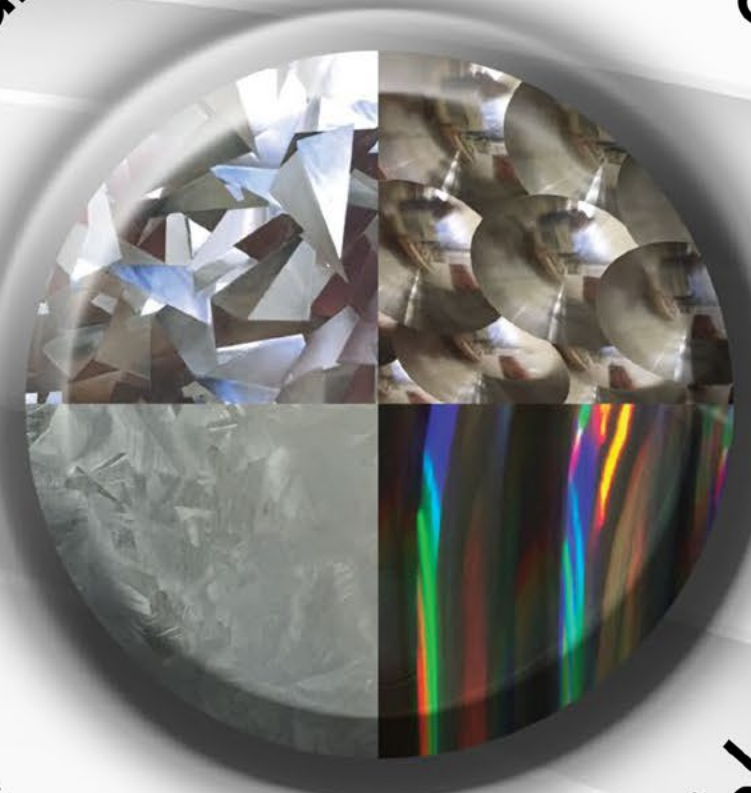
Dimension: 37" x 96" (940mm x 2440mm) / 1/16" (1,6mm)*
Finish: Glossy or Satin
Composition: Acrylic or Class "A" fire-rated polycarbonate, Eco-Solvent UV resistant ink, metallic film, vinyl
Important Details: Metallized panels are designed for indoor use only. Care must be taken when fabricating (cutting, drilling, edge finishing and gluing), please read instructions carefully
 *Other gauges also available, contact your customer service rep for details.



High Brilliance, angular look. Silver, gold or copper
Crystallized



Very High Brilliance, mirrored, 3-Dimensional Look
Reflexions



Low Brilliance. Similar to sheet metal
Galvanized



Dimension: 4' x 8' (1220mm x 2440mm) / 1/16" (1,6mm)*
Finish: Glossy or Satin
Composition: Acrylic or Class "A" fire-rated polycarbonate, Eco-Solvent UV resistant ink, metallic film, vinyl
Important Details: Metallized panels are designed for indoor use only. Care must be taken when fabricating (cutting, drilling, edge finishing and gluing), please read instructions carefully
 *Other gauges also available, contact your customer service rep for details.

Linear + Prismatic. Breaks white light into its elemental colors
Rainbow



Dimension: 4' x 8' (1220mm x 2440mm) / 1/16" (1,6mm)*
Finish: Glossy or Satin
Composition: Acrylic or Class "A" fire-rated polycarbonate, Eco-Solvent UV resistant ink, metallic film, vinyl
Important Details: Metallized panels are designed for indoor use only. Care must be taken when fabricating (cutting, drilling, edge finishing and gluing), please read instructions carefully
 *Other gauges also available, contact your customer service rep for details.



LUMI-ONYX is Lumigraf's line of resin alabasters, marbles and onyxes. Introduced in 2003, Lumi-Onyx can be used in a variety of applications including lighting design, feature walls, ceiling tiles and more.

- ◆ Available in a variety of finishes and substrates including Fire-Rated 'A' polycarbonate
- ◆ Designed to be backlit but can be used in other vertical applications
- ◆ Lightweight compared to traditional stone
- ◆ Customizable color and pattern**



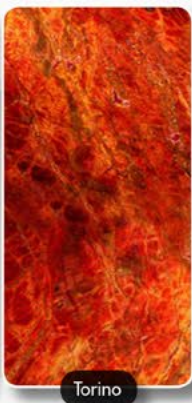
LUMI-ONYX is used for **COMMERCIAL** and **RESIDENTIAL** applications, such as:

- ◆ Light Fixtures
- ◆ Door inserts
- ◆ Feature Walls
- ◆ Bar Fronts
- ◆ Ceiling Tiles
- ◆ Backsplashes
- ◆ Columns
- ◆ Hundreds of other backlit applications



Dimension: 4' x 8' (1220mm x 2440mm) / 1/8" (3mm) or 1/4" (6mm)*
 Finish: Glossy or Satin
 Composition: Acrylic or Class "A" fire-rated polycarbonate, Eco-Solvent UV resistant ink, vinyl
 Important Details: Lumi-Onyx is designed for indoor use only, for outdoor applications, please see STONE+
 *Other gauges also available, contact your customer service rep for details.

Over 60 styles*** to choose from including:



** some exceptions apply; please contact your sales representative for additional information
 *** please visit our website to view all patterns and colors, samples are available upon request

STONE+ is Lumigraf's line of **translucent** faux stone decorative panels, made of **VOC** free polyresin for **interior** as well as **exterior** applications.

- ◆ A specially-formulated polyester resin which is both environmentally responsible and high-performing
- ◆ Designed to be backlit, acquires depth and texture when lit
- ◆ Impact resistant and lightweight
- ◆ UV resistant (blocks up to 98% of UV rays)
- ◆ Resistant to bacterial growth
- ◆ Stain resistant and easy to clean with mild soap and a soft cloth
- ◆ Easy to cut, bond, drill and sand with common woodworking tools



STONE+ is used for **COMMERCIAL** and **RESIDENTIAL** applications, such as:

- ◆ Light Fixtures
- ◆ Backsplashes
- ◆ Feature Walls
- ◆ Signage
- ◆ Furniture
- ◆ Closet Doors
- ◆ Retail Displays
- ◆ Ceiling Tiles
- ◆ Cabinet Doors
- ◆ Hundreds of other backlit applications

Dimension: 4' x 8' (1220mm x 2440mm) / 1/4" (6mm)*
 Finish: Satin (translucent)
 Composition: VOC free, non-toxic, polyresin
 Important Details: STONE+ can be used for outdoor applications, care must be taken to seal edges with silicone or adhesive. See technical documents for details.
 *Other gauges also available, contact your customer service rep for details.

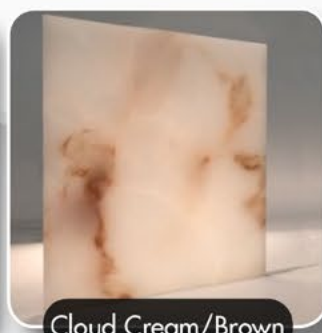
ALABASTER: available in 6 colors & patterns



Cloud Cream



Cloud Cream/Gray



Cloud Cream/Brown



Striped Honey



Cloud Buttermilk



Striped White

A Cost-Effective, Weather-Resistant and Lightweight Alternative to Real Quarry Stone





Lumigraf.ca

5680 Fullum St, Montreal, Quebec H2G 2H7
Toll free: 1 866.877.1495 Fax: 514.277.6488
sales@lumigraf.ca

